

HUTCHINSONS

Crop Production Specialists



**NATIONAL
REACH WITH A
LOCAL SERVICE**

hutchinsons.co.uk

About Us	3
Advanced Agronomy	5
Our Leading Services	6
Seed	12
Nutrition	13
Helix	14
Technical Trials	15
Packaging	16
Our Depots	18
Careers With Us	19



**IT'S OUR PEOPLE THAT
MAKE THE DIFFERENCE**

ABOUT US

We are a leading provider of agronomic advice and crop inputs in the UK

A forward-thinking, can-do attitude is at the forefront of our philosophy. Our long-standing commitment to customers and colleagues, technological advances, and continued management set us apart.



500+
PEOPLE

FOUNDED IN
1938

Advice and products to more than one million hectares of the UK's farmed area

Evaluating the latest technologies and farming practices at our Helix Technology Farms

Family owned, private business



OUR ETHOS

Our service

Our bespoke advice and services take your business to the next level, from everyday crop management decisions to strategic aims. Our expertise and local knowledge help to keep your business successful and profitable.

Our people

We celebrate our people's passions and areas of expertise including soil health, digital farming, agroecology, environmental stewardship, and farm business consultancy. Our colleagues have regular opportunities for continued learning and development, keeping our advice topical alongside the latest legislation and trends.

Our responsibility

We strive to be the best in our sector in sustainability, corporate governance and business practice through our services and products. We are committed to sustainable farming practices and campaign vigorously to ensure policymakers know about the needs of British farming.



AGRONOMY & ADVICE

ADVANCED AGRONOMY

Practical advice tailored to your requirements

- Supporting integrated farm management practices
- Profitable farming whilst upholding the highest environmental standards
- Backed by a varied in-house R&D programme including Helix Farms
- Guidance on end market and retail protocol requirements
- Specialist services including analytical and laboratory

Our agronomists have BASIS, FACTS and additional specialist qualifications.



Arable

All broad-acre arable crops including cereals, oilseed rape and pulses.



Horticultural

All top and soft fruit, hops, vines, ornamentals and other outdoor and protected horticultural crops.



Vegetable

Alliums, brassicas, root crops, herbs, salads and other specialist crops.



Forage

All forage crops including grassland, maize and wholecrop.

OUR LEADING SERVICES

You have a question, we have the answer...

Our services support the agronomy advice at the core of your business. We provide solutions through our unrivalled advice, services and people.





Translating data into knowledge

Omnia is the next generation farm management software that can help you transform your business, save time and maximise efficiency.

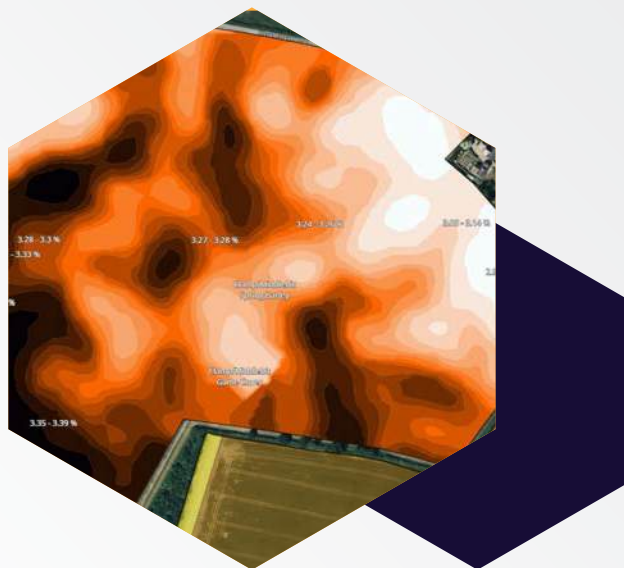
The flexible cloud-based software allows you to collect and layer data onto field maps to provide insights to the field's performance and improve your productivity, profitability and sustainability.

Omnia is the most versatile platform on the market:

- Unique tools including financial and carbon cost of production, stewardship and SFI management and business planning
- Record live field operations
- Manage stocks in real-time
- Create spray plans which are audited by Hutchinsons HALO crop protection database
- Compatible with the most popular machines and platforms

Store all the information you need in one place and easily capture knowledge on the go.

omniadigital.co.uk



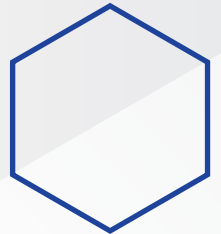
OUR LEADING SERVICES



High definition soil mapping

TerraMap is a digital soil scanning system that measures and maps most soil properties and soil texture changes within the field. TerraMap produces the world's highest resolution mapping layers at over 800 data points per hectare.

- Allows you and your agronomist to understand your soil and make the most of digital farming
- Use the results to produce variable rate application plans for seed and nutrition





Healthy Soils

Building Resilience

Make your soil work for you

Understanding your soil and having good soil management practices can help you to optimise crop nutrition and productivity.

Link with Omnia to map soil management and health over time.

We have a Healthy Soils service to suit your every need including:

- Detailed soil analysis
- Measurement of soil nutrient reserves
- Plant tissue and sap analysis
- Harvested crop analysis
- Inter-row crop evaluation
- Water analysis
- Bespoke consultancy advice



OUR LEADING SERVICES



Environmental Services

Practical agri-environmental advice

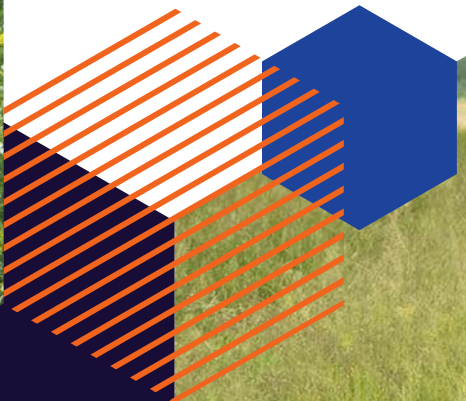
- Countryside Stewardship (CS)
- The Sustainable Farming Incentive (SFI)
- Environmental Land Management Scheme (ELMS)
- Seed mix advice
- Bespoke on-farm projects



Farm Business Consultancy

Innovative analysis to implement change and increase profitability

- Gross margins and rotation planning
- Fixed cost review
- Business health check
- Farm management
- Diversification





Helping you to produce crops
in partnership with nature

- Minimal, targeted inputs
- Uplift in biodiversity



Manage your environmental areas,
agroecology practices, soil plans
and financial performance easily





SEED

Our seed specialists offer independent advice to help you get the correct species and varieties for your situation.

Link with our other services and agronomy advice to make an informed decision.

Variable rate plans, advice and technology integration through Omnia.

We are a leading supplier of agricultural and amenity seeds including:

- Cereals
- Oilseed rape
- Pulses
- Forage crops including grass and maize
- Game cover
- Amenity grass
- Catch, cover and companion crop mixes
- Environmental stewardship mixes

NUTRITION

Complete, integrated crop nutrition advice alongside unbiased product supply.

- ◆ Macro and micro nutrition including solids, liquids and renewables
- ◆ Full legislative and environmental compliance consultancy
- ◆ Variable rate plans, advice and technology integration through Omnia

We supply a portfolio of fertilisers and foliar feeds.

Our advice is tailored to your requirements and takes environmental and practical considerations and your wider business objectives into account.





Helix is a growing network of farms that evaluate technology and data on a field scale to support on-farm decisions. Generating data from new technology is relatively straightforward, interpreting the data with knowledge and advice is the additional value that Helix brings, leading to improved farm productivity and sustainability.

Since its launch, Helix has focused on five key areas:

- How can data improve farm sustainability?
- How do we measure and improve soils?
- How do we more effectively manage nutrition?
- How do crop genetics benefit the grower?
- Delivering tangible integrated crop management

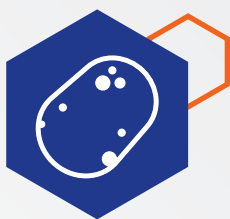
To find out more about our network of Helix farms, visit helixfarm.co.uk

TECHNICAL TRIALS

Technical backup at our nationwide trials

Our in-field technical trials allow you to observe demonstrations in conditions close to your own and directly benefit from the findings.

In addition to arable crop trials, we have specialist demonstrations in:



Potato



Brassica



Maize



Cover crops



Fruit



Vegetables



Environmental mixes



Orchard design through HELIOS

Visit our website for events in your region



PACKAGING

We offer a comprehensive range of stock and bespoke packaging solutions to meet your packaging requirements



Our wealth of knowledge and continued drive for innovation give you the advantage when selecting packaging that meets your sustainability, durability and presentation objectives.

Our product range includes:

- Plastic, paper, and pulp punnets
- Hand and machine erect boxes
- Cartonboard and pulp pre-pack trays
- Cavity tray liners
- Drinks packaging
- Bags and sacks
- Palletisation items

orders@producepackaging.co.uk
producepackaging.co.uk



Leading UK supplier of fresh food packaging

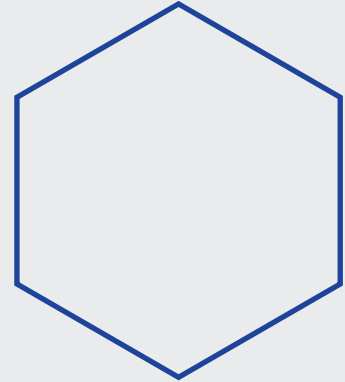


Next day delivery of stock items nationwide

40+ years of experience in the industry

BRCGS AA+ accredited across all depots

Own logistics fleet of vehicles and drivers



Innavisions

packaging for your future

Specialising in in-mould labelling and bespoke solutions, Innavisions are experts in fully recyclable packaging for the fresh food industry.

Our product range includes:

- Tamper evident packaging
- Film sealable packaging
- Injection moulded packaging
- Thermoformed containers
- Paperboard containers

sales@innavisions.com
innavisions.com



OUR DEPOTS

We distribute all major manufacturers and suppliers of agricultural and horticultural inputs from our nationwide network of BASIS registered stores.

Our drivers are ADR trained and our vehicles are monitored to ensure a reliable, timely and sustainable delivery service.



JOIN OUR TEAM

CAREERS WITH US

We are committed to an enriched team culture celebrating our people!

Training is extremely important to us and we support colleagues to develop their skills and careers in all areas of the business. We are proud of our reputation as one of the foremost agronomic advisor employers in the UK.

Develop your career in our dynamic business where it's our people that make the difference.

HUTCHINSONS FOUNDATION

The Hutchinsons Foundation is the most comprehensive training programme for new agronomists in the UK.

The Foundation equips you with the technical knowledge, expertise and customer focus essential to establish yourself as a successful agricultural or horticultural advisor.

Visit the careers section of our website for available vacancies





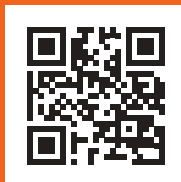
Over 200 advisors are involved in the management of more than 1 million hectares of agricultural and horticultural crops; with a range of soil types, cropping and environmental objectives. This ensures that our decision-making and subsequent advice is based on local factors and conditions.

Our industry is very fast moving technically and our customers rightly expect us to keep ahead of the game in all areas of crop husbandry and farm management. This requires considerable investment in training and development of our most valuable resource; our people”

DAVID HUTCHINSON – CHAIRMAN

X @Hutchinsons_Ag
f HLHutchinsons
@hutchinsonsagronomy

For more information go to:
hutchinsons.co.uk



HUTCHINSONS
Crop Production Specialists